

 **Kelly BevWay Systems Co.**



## **Kelly BevWay<sup>®</sup>** **Beverage Line Conduit Systems**

*The industry's most reliable and proven source for aluminum, steel and PVC conduit chases for beer, soda and beverage line containment*

**When there is no margin for error<sup>SM</sup>**

*A Division of Kelly Systems Inc.*

Email: [sales@kellybevway.com](mailto:sales@kellybevway.com) • Phone: 312-733-5901 • Web: [www.kellybevway.com](http://www.kellybevway.com)

## Where Service & Experience Meet

**Kelly BevWay** is the most trusted name for quality, reliability and service.

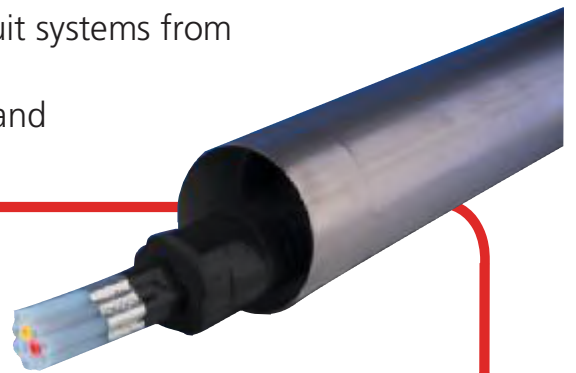
**Kelly BevWay** through its conduit systems revolutionized the installation and distribution of products like: beer, soda, liquor, wine, juices, fry oils, and CO2 supply lines for the food and beverage industry.

**Kelly BevWay** systems use conduit that is best suited for overhead conditions and below grade installations to meet applicable building codes and safety requirements.

**Kelly BevWay** engineers and installs beverage conduit systems from beverage supply to dispensing locations.

**Kelly BevWay** also assists contractors with take-off and bidding of beverage conduit installations.

## The Kelly BevWay<sup>®</sup> Advantages



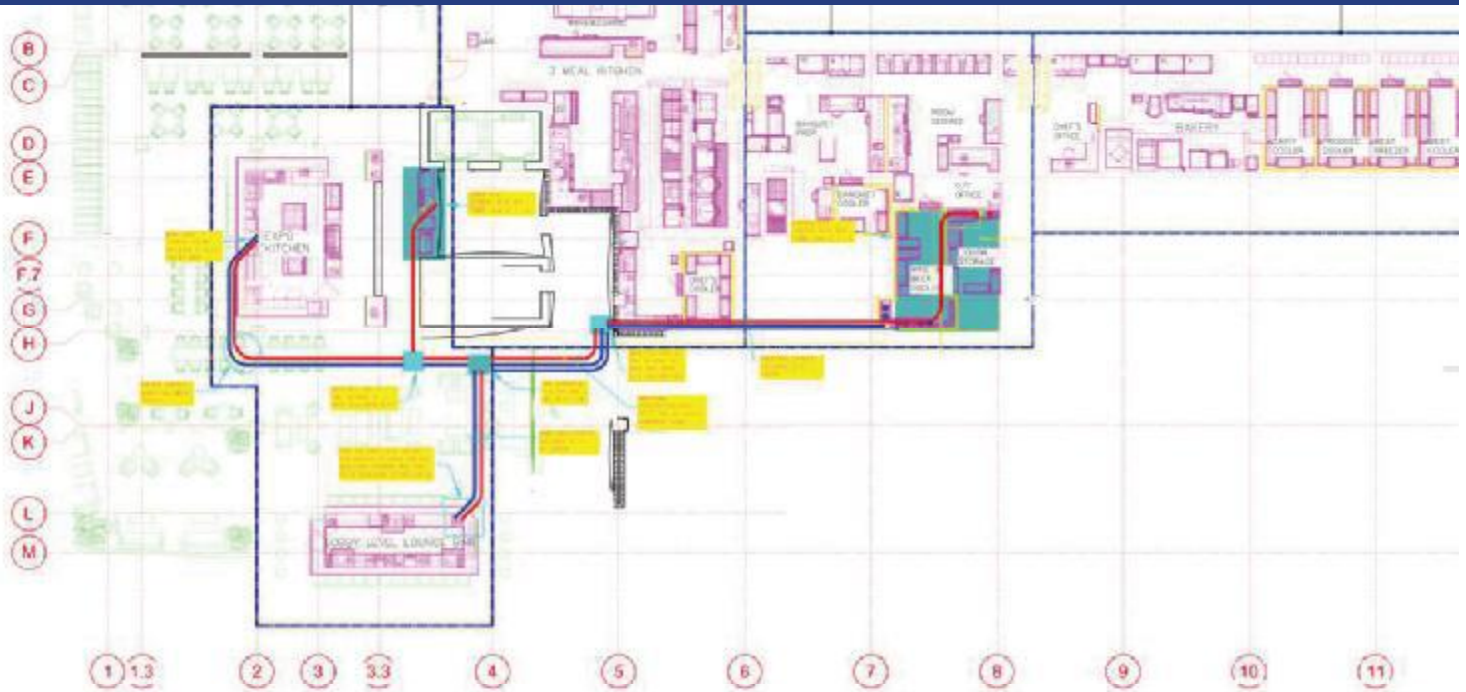
- **Health & Fire Codes:** Many local codes require beverage lines to be enclosed within a conduit chase to eliminate vermin and minimize or prevent health, smoke and fire hazards.
- **Slab on Grade/Line Support:** Conduit is the best method for installing beneath slab on grade and supporting overhead beverage line runs.
- **Leak Containment:** Waterproof conduit protects against leaks and excessive condensation.
- **Cost Effective Installation/Replacement:** Kelly BevWay conduit does not require the installer to use an awkward mechanical joint preparation device during installation.
- **Easy Installation:** Kelly BevWay provides long radius sweep and a smooth interior conduit that allows for easy installation of bundled liquid product lines.

**Whether your project is considered large or small, we have the materials and systems to meet your requirements:**

Sport Stadiums, Ballparks & Arenas ● Entertainment & Convention Centers  
Resorts, Hotels & Casinos ● Restaurants & Chains ● Business & Institutions

*A Division of Kelly Systems Inc.*

Email: [sales@kellybevway.com](mailto:sales@kellybevway.com) ● Phone: 312-733-5901 ● Web: [www.kellybevway.com](http://www.kellybevway.com)



## Your Single Source Solution

From CAD designs and layouts to precision manufacturing of materials and complete installation; you can be assured of systems and services that meet or exceed your specifications. Kelly BevWay serves architects, consultants, and contractors anywhere in North or South America.

Kelly BevWay is an invaluable resource for engineering, including conduit systems before manufacturing and installation. As a pioneer of the industry, we have detailed knowledge of complete beverage systems, from the actual conduit systems to the beverage system and equipment requirements, and from bulk CO2 systems to multi-beverage distribution.



*Systems available in sizes from 2" to 10" plus  
Large Inventory, ready for immediate shipment*

*A Division of Kelly Systems Inc.*

Email: [sales@kellybevway.com](mailto:sales@kellybevway.com) • Phone: 312-733-5901 • Web: [www.kellybevway.com](http://www.kellybevway.com)

## Reasons For Beverage Line Conduit

**Health Codes** - Many local health codes require that remote beverage lines be enclosed within conduit to prevent vermin from infiltrating the line run causing problems for the beverage system and/or possible health hazards.

**Fire Codes** - Many local fire codes require that beverage lines be enclosed within aluminum conduit to prevent the potential air contamination from the release of toxic fumes by PVC lines during a fire.

**Long Radius Sweeps** - Bends with a minimum radius of 24 inches simplifies the work of the beverage bundle installer and prevents damage to the bundle.

**Slab On Grade** - Conduit is the only practical method of installing beverage lines beneath slab on grade.

**Support of Line Runs** - Conduit is the best means of installing and supporting line runs above grade.

**Leak Containment** - Waterproof conduit will contain leaks and/or excess condensation (from refrigerated lines) from draining onto ceiling tiles, furniture, flooring or patrons below the suspended ceiling.

**Cost Effective Installation** - Conduit provides a "pathway" that allows liquid product lines to be easily installed in a cost effective manner. Improperly installed conduit may require an installer to use a mechanical pulling device which may damage the liquid product lines or the insulation sleeving covering these lines.

**Appearance** - Exposed liquid product bundles are unsightly and detracts from the clean sharp appearance of an entertainment venue.

**Defined Space** - The beverage conduit systems are normally installed before walls and partitions, etc. are in place. The conduit system provides a clear path for the beverage line. New beverage lines are normally pulled through the conduit system at the end of the construction cycle after all the interior modifications have been installed. Liquid product lines should not be installed during the early stages of the construction as they will likely be damaged during construction.

**Plenum** - Air plenum ceiling area requires aluminum conduit to maintain the integrity of the plenum compartment.

**Quality System - Cooling Product** - Beverage line systems normally handle products with high margins. It is therefore important that the system be a quality system to insure a quality product which can generate these high margins. Without the conduit system the cooling of the beverage lines, etc. can be compromised.

*Kelly BevWay will handle the complete beverage conduit system from engineering and layout of the system through the installation of a complete system.*

*A Division of Kelly Systems Inc.*

Email: [sales@kellybevway.com](mailto:sales@kellybevway.com) • Phone: 312-733-5901 • Web: [www.kellybevway.com](http://www.kellybevway.com)

# Kelly BevWay Systems Co.



## **Sports Stadiums, Ballparks & Arenas**

*Professional, Collegiate, Civic, Local and more*

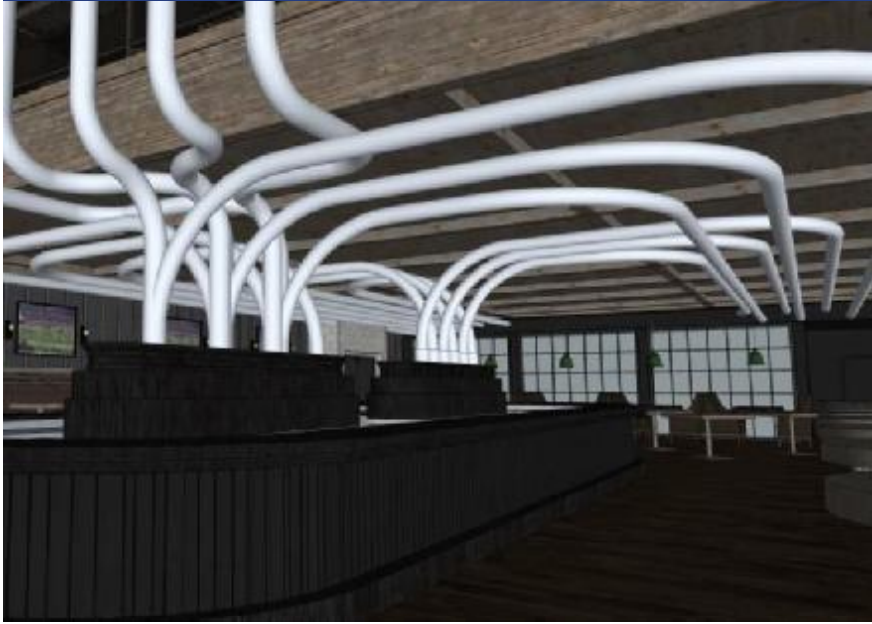
- Atlanta Falcons - Mercedes Benz Stadium*
- Miami Heat - American Airlines Arena*
- Detroit Lions - Ford Field*
- Milwaukee Brewers - Miller Park*
- UConn Huskies - Rentschler Field*
- Houston Rockets - Toyota Center*
- Seattle Seahawks - Century Link Stadium*
- Chicago Bears - Soldier Field*
- Seattle Mariners - Safeco Field*
- Green Bay Packers - Lambeau Field*



*A Division of Kelly Systems Inc.*

Email: [sales@kellybevway.com](mailto:sales@kellybevway.com) • Phone: 312-733-5901 • Web: [www.kellybevway.com](http://www.kellybevway.com)

# Kelly BevWay Systems Co.



## Restaurants & Chains

*National Chains, Independents, Single Site,  
Airports, Food Courts & More*

- Craft Beer Market Canada* ● *Kimpton Grand Cayman*
- Cheese Cake Factory* ● *Gordon Ramsay*
- Hard Rock Cafe* ● *Barrel & Bushel*
- Yard House* ● *Emril's*

Enhance  
Your Decor with  
Hundreds of Finishes  
to Choose From



*A Division of Kelly Systems Inc.*

Email: [sales@kellybewway.com](mailto:sales@kellybewway.com) ● Phone: 312-733-5901 ● Web: [www.kellybewway.com](http://www.kellybewway.com)

## **Resorts, Hotels & Casinos**

*4 & 5 Star Hotels & Resorts, Las Vegas, Atlantic City,  
Indian Nations, Riverboats & more*

- Bellagio, Las Vegas*
- Hilton Hotel, Houston*
- Atlantis Resort, Nassau*
- Sheraton Hotel & Towers, Chicago*
- Disney's Animal Kingdom, Orlando*
- Presque Isle Downs, Pennsylvania*
- Rhythm City Casino, Davenport*
- Thunder Valley Casino, Lincoln*
- Venetian Resort, Las Vegas*
- Crown Plaza Hotel, New York*
- Foxwoods Resort Casino, Mashantucket*
- Showboat Hotel & Casino, Atlantic City*
- Scarlet Pearl Casino, D'Iberville*
- MGM Grand, Las Vegas*



*A Division of Kelly Systems Inc.*

Email: [sales@kellybevway.com](mailto:sales@kellybevway.com) • Phone: 312-733-5901 • Web: [www.kellybevway.com](http://www.kellybevway.com)